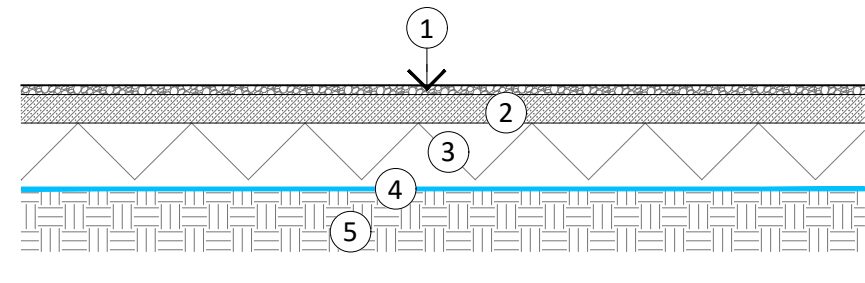
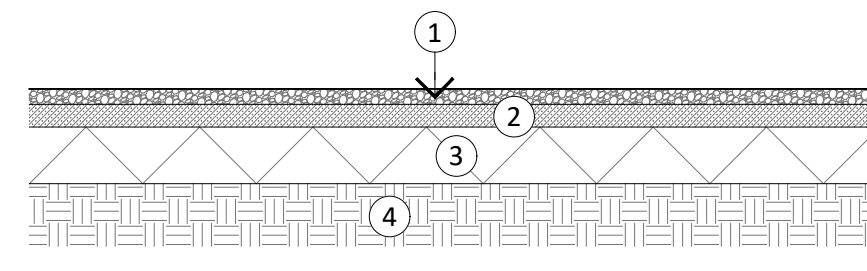


Copyright: All Rights Reserved.
 This work is copyright and cannot be re-produced or copied in any form or by any means (graphic, electronic, or mechanical including photocopying) without the written permission of the originator. Any license, express or implied, to use this document for any purpose whatsoever is restricted to the terms of the agreement or implied agreement between the originator and the instructing party.
 Unless otherwise stated all dimensions are in millimeters. Where dimensions are not given, drawings must not be scaled and the matter must be referred to the Landscape Architect. If the drawing includes conflicting details/dimensions the matter must be referred to the Landscape Architect. All dimensions must be checked on site. The Landscape Architect must be informed, by the Contractor, of any discrepancies before work proceeds.
 THIS DRAWING IS TO BE READ IN CONJUNCTION WITH RELEVANT CONSULTANT'S DRAWINGS.



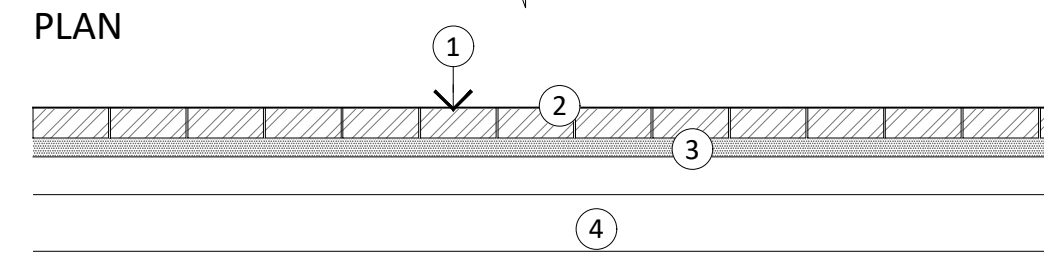
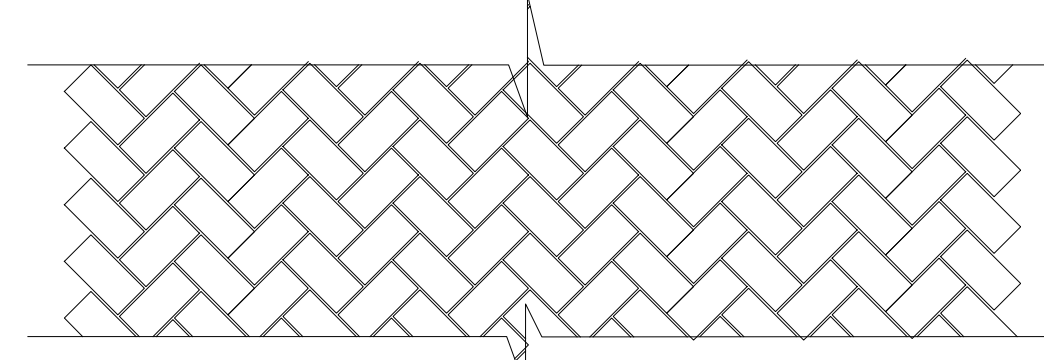
SECTION Note: All sub-bases to be confirmed by engineer

- LEGEND:
- 25mm deep, 6mm permeable resin bound gravel. Colour: Barley Butter
 - 75mm min permeable open graded asphalt binder course to Supplier's specifications
 - 175mm compacted crusher run stone 110mm nominal size
 - Geotextile membrane
 - Well compacted sub-grade



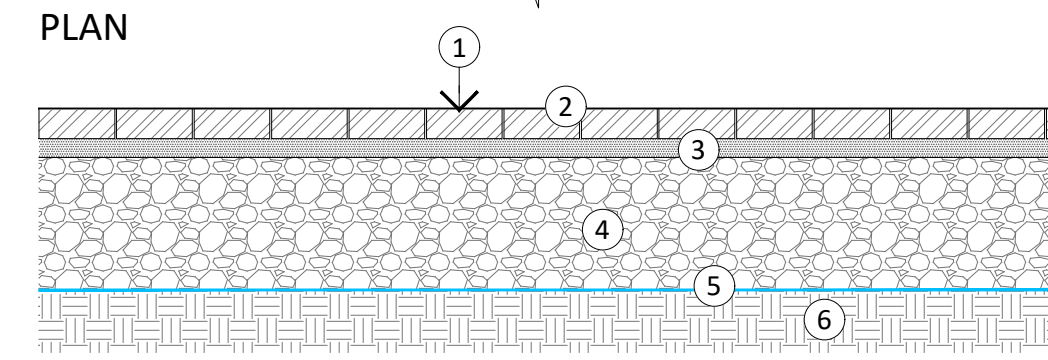
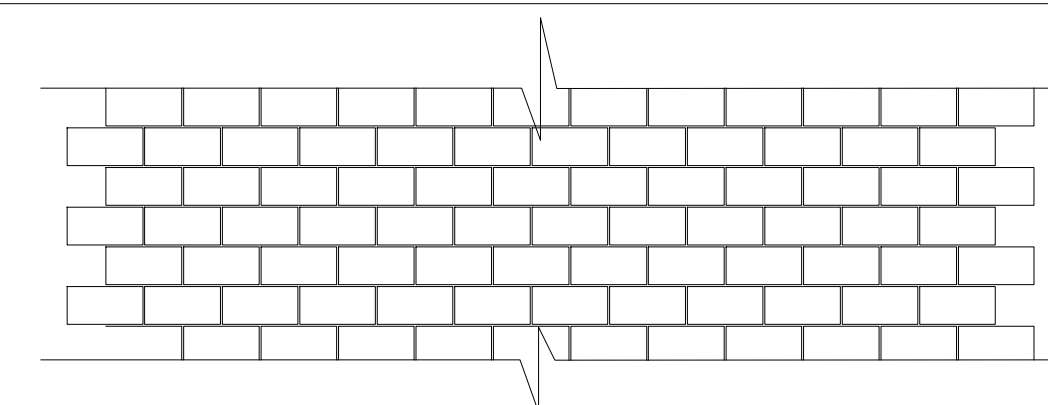
SECTION Note: All sub-bases to be confirmed by engineer

- LEGEND:
- 50mm deep stone mastic asphalt surface to Engineer's specification.
 - 60mm macadam sub-base
 - 150mm compacted crusher run stone sub-base, 110mm nominal size
 - Well compacted sub-grade



SECTION Note: All sub-bases to be confirmed by engineer

- LEGEND:
- PC CONCRETE BLOCK PAVING - SIZE 200 X 100 X 80mm DEPTH LAID IN A HERRINGBONE PATTERN.
 - 6MM GRIT BRUSHED INTO THE JOINTS UNTIL THEY ARE COMPLETELY FILLED.
 - 50MM THICKNESS OF 6MM GRIT
 - REFER TO ENGINEER'S DRAWINGS FOR ALL LEVELS AND BUILD-UP.



SECTION Note: All sub-bases to be confirmed by engineer

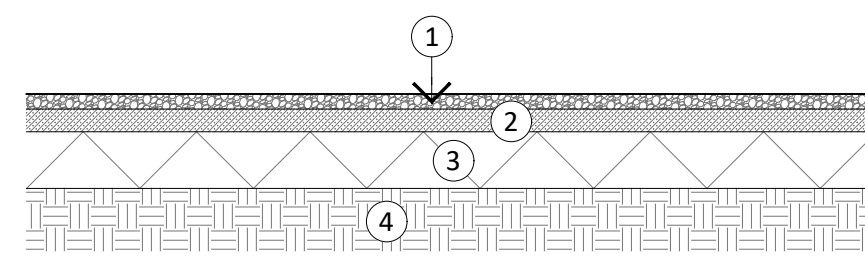
- LEGEND:
- Permeable PC concrete block paving - Size 200 x 100 x 80mm depth laid in a stretcher bond pattern
 - 6mm grit brushed into the joints until they are completely filled.
 - 50mm thickness of 6mm grit
 - 350mm thickness coarse graded aggregate
 - Geotextile
 - Well compacted sub-grade

01 | P8 - RESIN BOUND GRAVEL Section Scale 1:20

02 | P9 - CYCLE LANE - ASPHALT Section Scale 1:20

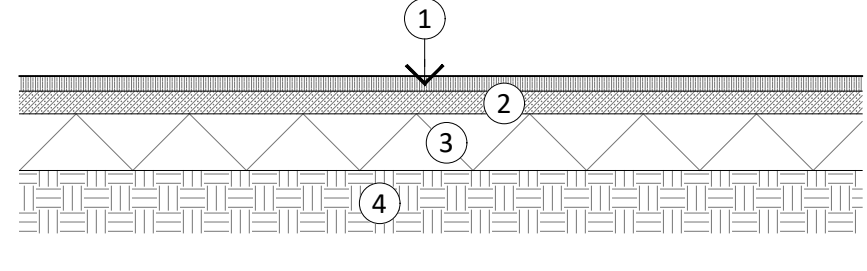
03 | P10 - SHARED SURFACE - PC CONCRETE BLOCK PAVING Plan & Section Scale 1:20

04 | P11 - CAR PARKING - PERMEABLE PC CONCRETE BLOCK PAVING Plan & Section Scale 1:20



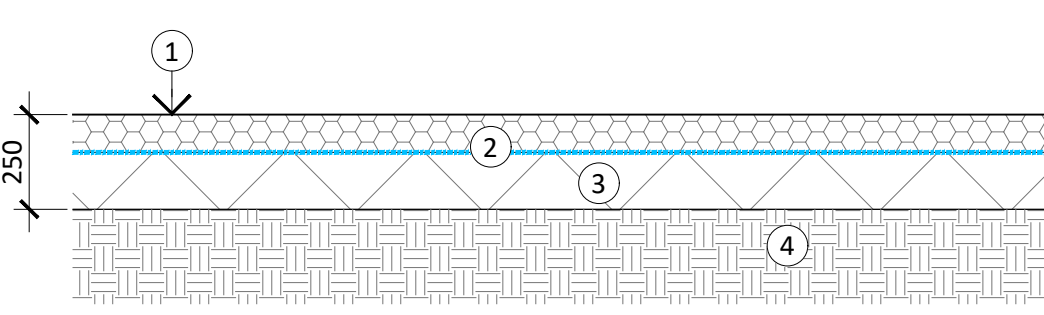
SECTION Note: All sub-bases to be confirmed by engineer

- LEGEND:
- 50mm deep asphalt surface to Engineer's specification.
 - 60mm macadam sub-base
 - 150mm compacted crusher run stone sub-base, 110mm nominal size
 - Well compacted sub-grade



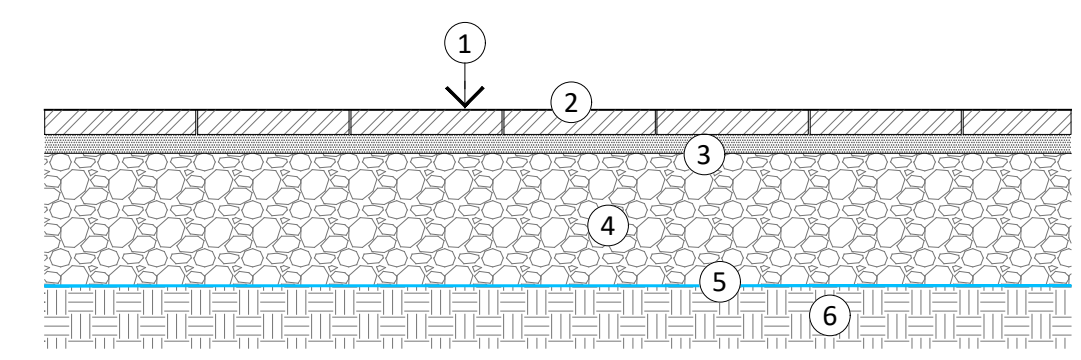
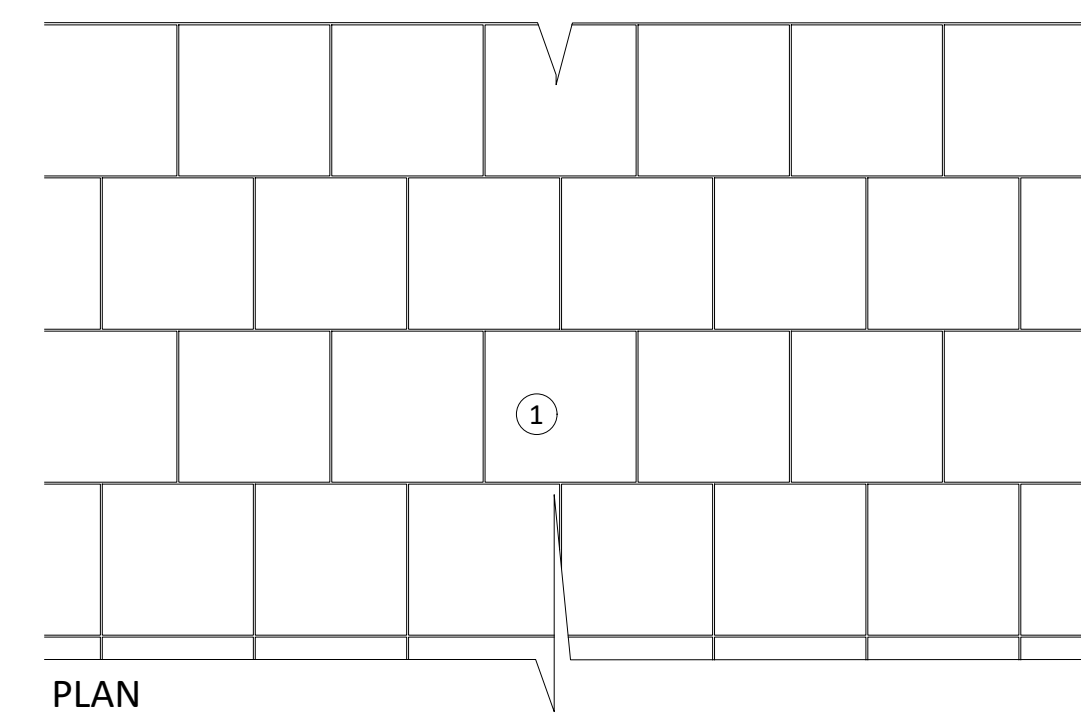
SECTION Note: All sub-bases to be confirmed by engineer

- LEGEND:
- 40mm deep DBM wearing course
 - 60mm macadam sub-base
 - 150mm compacted crusher run stone sub-base, 110mm nominal size
 - Well compacted sub-grade



SECTION Note: All sub-bases to be confirmed by engineer

- LEGEND:
- Rubber safety surface, resin bound, placed around play equipment, depth dependant on play equipment, to be determined by specialist contractor. To comply with BS EN 1177 and BS 7188.
 - Permeable Geotextile with 250mm overlap.
 - Type 1 crushed stone sub-base.
 - Well compacted sub-grade



SECTION Note: All sub-bases to be confirmed by engineer

- LEGEND:
- Permeable PC concrete block paving. Size 400 x 400 x 65mm depth laid in a stretcher bond pattern
 - 6mm grit brushed into the joints until they are completely filled.
 - 50mm thickness of 6mm grit
 - 350mm thickness coarse graded aggregate
 - Geotextile
 - Well compacted sub-grade

05 | P12 - CARRIAGEWAY - ASPHALT Section Scale 1:20

06 | P13 - TARMAC Section Scale 1:20

07 | P14 - WETPOUR/ MULCH SAFETY SURFACING Scale 1:20

08 | P15 - PERMEABLE PC CONCRETE SLAB PAVING Plan & Section Scale 1:20

PLANNING	CT	17.03.22	P01
Revision Details	AB	Date	Rev
	By		
	Check		

Status: PLANNING



Hawarden House, 163 Upper Newtownards Road, Belfast, BT4 3HZ
 T: +44 (0)28 9029 8020 E: info@parkhood.com parkhood.com

Client: Tiznow Property Company Limited (Comer Group Ireland)

Project: City Park Development at the Former Tedcastles Site, Centre Park Road, Cork City

Title: Landscape Details - Paving Sheet 2 of 2

Scale@A1: 1:20 Date: March 2022

Dwg.no: 7248-L-2901